



MAKERS OF STAND AID AND ROLL AID

PO BOX 386
Sheldon, IA 51201

1-800-831-8580

1-712-324-2153 (In Iowa)

Fax: 712-324-5210

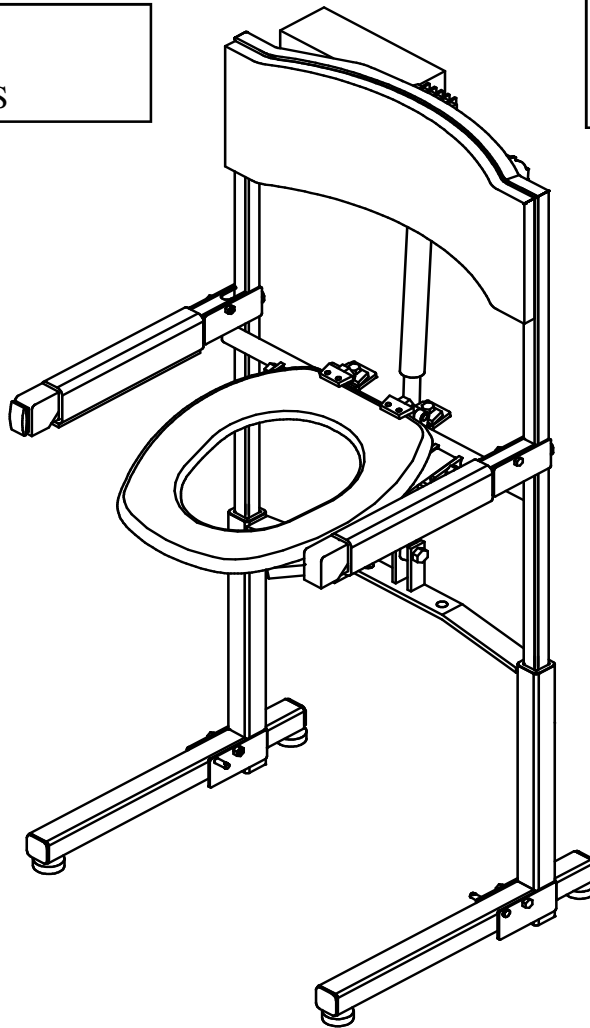
PTA

(POWER TOILET AID)

**INSTRUCTIONS AND WARRANTY FOR
THE PTA MODELS 100, 200 & 400 MANUFACTURED
BY STAND AID SERIAL # _____**

ASSEMBLY
INSTALLATION
REPLACEMENT PARTS

READ complete manual
CAREFULLY BEFORE
attempting operation.



CAUTION:

All PTA models should be used only on level, smooth surfaces. Please exercise caution and good judgement

INTRODUCTION

Thank you and congratulations on your purchase of the PTA (*POWER TOILET AID*). We believe using the PTA will assist you in your everyday life and enhance your outlook on life. Read complete manual before assembly and use of the Power Toilet Aid

GENERAL INFORMATION

The Power Toilet Aid (PTA) is designed for individuals with musculo-skeletal or neuromuscular limitations due to disease or injury.

The PTA will help reduce stress on the knee and hip joints and is safe and comfortable for the user. Another benefit of the PTA is reduced potential of back injuries among attendants caused by lifting patients. The PTA is easy to use, a lift switch is mounted for finger tip control on the left or right side handle bar. When fully extended the PTA will lift the seat 13” and tilt down slightly. The PTA is available for 14” and 18” stool heights as well as an 18” mobile unit for institutional facilities.

The PTA is also great for traveling, it is collapsible into a 9”x 40”x22” package and will adapt to most standard toilets in minutes. The battery operated unit is made of steel tubing for strength and durability and will lift up to 400 lbs. You can use your own toilet seat with the PTA and still lift the seat for easy cleaning. The Unit is shipped complete (76 lbs. UPS) and requires only a few tools for installation.

TOOLS NEEDED

- 1 – Flat Screwdriver
- 1 – Tape Measure
- 1 – 9/16” Open end wrench

WHEN CALLING FOR SERVICE PLEASE HAVE THE SERIAL NUMBER OF YOUR UNIT READY FOR THE STAND AID REPRESENTATIVE THIS WILL HELP IN THE SERVICING OF YOUR PTA (Power Toilet Aid) THANK YOU. STAND AID SERVICE DEPARTMENT.

TABLE OF CONTENTS

Cover	Page #1
Introduction and General Information	Page #2
Table of Contents and PTA Models,	Page #3
Limited Warranty Information	Page #4
Safety Precautions	Page #5
Parts Breakdown and Parts List	Page #6
Assembly Instructions	Page #7
Trouble Shooting & Battery Information	Page #8
PTA Model 400 (mobile) Information	Page #9

MODELS

100 = 14"

200 = 18" Standard

400 = 18" Institutional (mobile)

Note: All parts for each model are not shown in this manual. Parts are the same or similar for all models. Read manual carefully for installation of your PTA model.

LIMITED WARRANTY POWER TOILET AID (PTA)

Each Stand Aid of Iowa, Inc. product has been carefully inspected and tested before shipment.

Accordingly, we warrant each POWER TOILET AID which is sold against defects in workmanship and material under normal use for life excluding the motor, drive train and electrical components which are warranted for six months and the batteries which are warranted for 90 days from the date of shipment from Stand Aid. This warranty shall not extend to and we shall have no responsibility with respect to products which have been abused, misused, altered or as to which repair has been made or attempted by others.

This warranty is made lieu of all other warranties with respect to the product covered hereby and there are no other warranties, whether expressed or implied of merchantability or otherwise, except the warranty expressly stated herein. The remedy set forth herein shall be the sole exclusive remedy of any purchaser with respect to any defective product. Under no circumstances shall STAND AID OF IOWA be liable for any injury, loss, damage or expense suffered or incurred with respect to any misuse of the STAND AID OF IOWA'S products.

If you have any questions or need further information, please feel free to call our offices at: 1-800-831-8580.

SAFETY PRECAUTIONS

1. Keep small children away from PTA at all times.
2. The PTA should only be operated by authorized personnel.
3. If the PTA is not going to be used for a period of days, always disconnect the wiring harness from the battery.

OPERATING INSTRUCTIONS

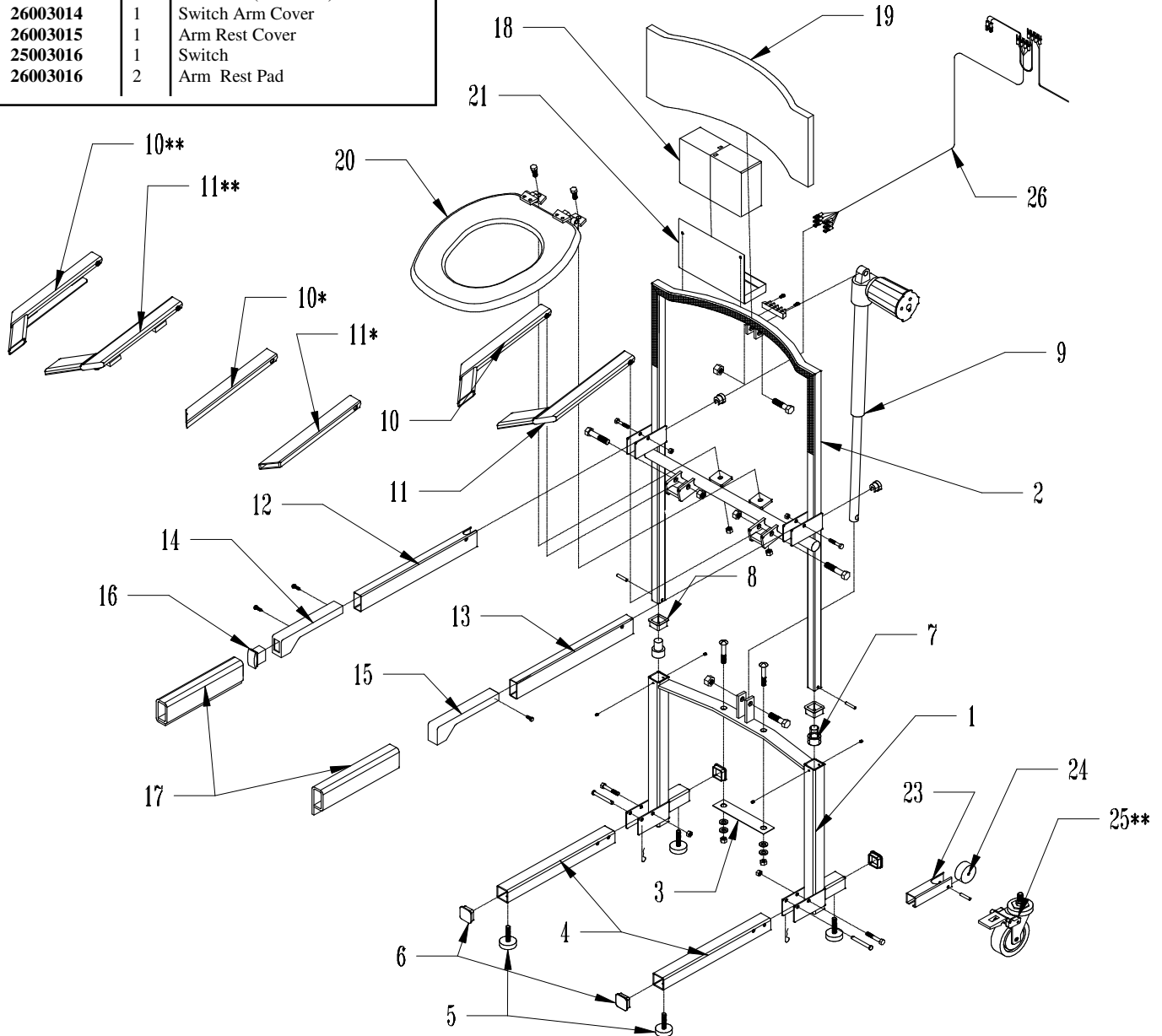
1. Keep battery fully charged.
2. Best time to charge battery is over night when PTA is not being used.
3. After every 6 to 8 lifts charge the battery for no more than 8 to 10 hours.
4. To charge the E.P. battery pack simply plug the black charger box into any 110 volt safe household electrical outlet.

PTA PARTS BREAKDOWN and PARTS LIST

REF. #	PART #	QTY.	DESCRIPTION
1.	73002001	1	Bottom Base (18" Stand.)
*	72002001	-	Bottom Base (14")
**	72002R01	-	Bottom Base (18" mobile)
2.	73002001	1	Upper Assembly (18")
*	72002002	-	Upper Assembly (14")
3.	26003013	1	Gasket
4.	72001001	2	Legs (14",18" Stand.)
**	73002009	2	Legs (18" mobile)
5.	25003012	4	Adjustable Leg Pads
6.	25003013	4	Tube Caps
7.	73002008	2	Glide
8.	25003014	2	Tube Slide Insert
9.	25003015	1	Actuator
10.	73002006	1	Rt. Seat Support (18")
*	72001026	-	Rt. Seat Support (14")
**	73002004	-	Rt. Seat Support (18" mobile)
11.	73002005	1	Lt. Seat Support (18")
*	72001013	-	Lt. Seat Support (14")
**	73002003	-	Lt. Seat Support (18" mobile)
12.	72001015	1	Switch Arm (Rt. or Lt.)
13.	72001025	1	Arm Rest (no switch)
14.	26003014	1	Switch Arm Cover
15.	26003015	1	Arm Rest Cover
16.	25003016	1	Switch
17.	26003016	2	Arm Rest Pad

REF. #	PART #	QTY.	DESCRIPTION
18.	25003017	1	Battery
-	25003018	1	Battery Charger
19.	26003017	1	Back Rest
**20.	25003019	1	Toilet Seat (18" mobile)
21.	73002007	1	Battery Bracket (18" mobile)
23.	72101001	2	Opt. Wheel Insert (14",18")
24.	25003020	2	Opt. Wheel
25.	25003008	4	Caster Wheel (18" mobile)
26.	25003021	1	Wiring Harness
27.	25003022	2	Grommet
*28.	26003019	1	Rt. Seat Support Cover (14")
*29.	26003020	1	Lt. Seat Support Cover (14")
**30.	25003023	1	Toilet Pail (18" mobile) not shown

* Model 100 (14") only
 ** Model 400 (18" mobile) only



ASSEMBLY & INSTALLATION INSTRUCTIONS

1. After unpacking the PTA find the switch arm and assemble it to the PTA using the 1/4" x 1 1/4" bolt and locknut. (note switch arm can be on the right or left side depending on how the unit was ordered) See image #1.

2. Locate the battery and place it into the battery pan. Plug in the battery. .See Page #8

3. The PTA must be raised a few inches for access to the securing holes. Push the control switch located in the end of arm rest up until PTA raises 4 or 5 inches.

4. The PTA is secured to the existing toilet. Remove the toilet seat from the existing toilet. Keep the bolts and nuts.

5. Secure existing toilet seat to top holes on the PTA using the bolts and nuts you removed from your existing toilet seat. CAUTION: Some bolts need to be cut off, so when the unit is in the complete down position they don't hit the PTA frame or toilet. See image #2.

6. Place gasket from the PTA package over existing commode holes. Position PTA over gasket and secure using 3/8"x 2-1/2" carriage bolts (#31) and wing nuts (#32). That are provided with the PTA.

7. Adjust the leg pads under the front of the PTA to touch the floor and firmly support the PTA.

8. The PTA is raised by pushing control switch (located in the end of the arm rest) up until desired height is reached. To lower push switch down.

9. Adjust tilt of toilet seat arms with two set screws on support arm brackets.

10. Battery life is 3-5 years on average. Do not operate while charging. See pg. 8 for battery information

IMAGE #2

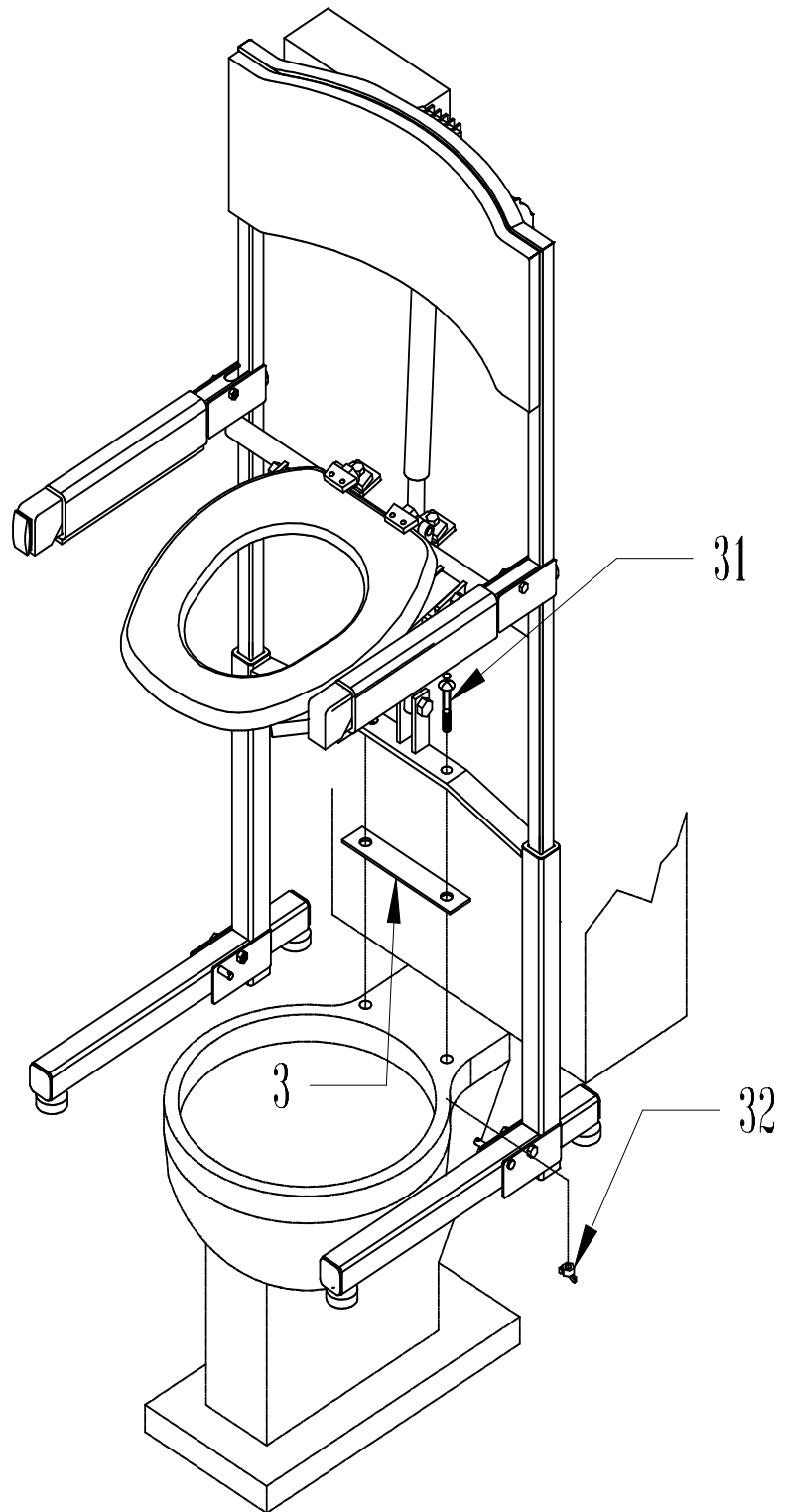
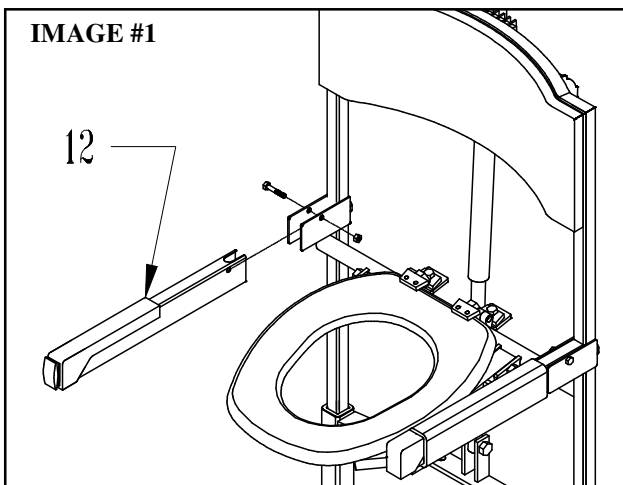


IMAGE #1



11. Serial number tag is located on the inside of the switch arm, under padding.

12. Depending on the stool height adjust the leg pads for height. (longer leg pads are available on request.)

TROUBLE SHOOTING

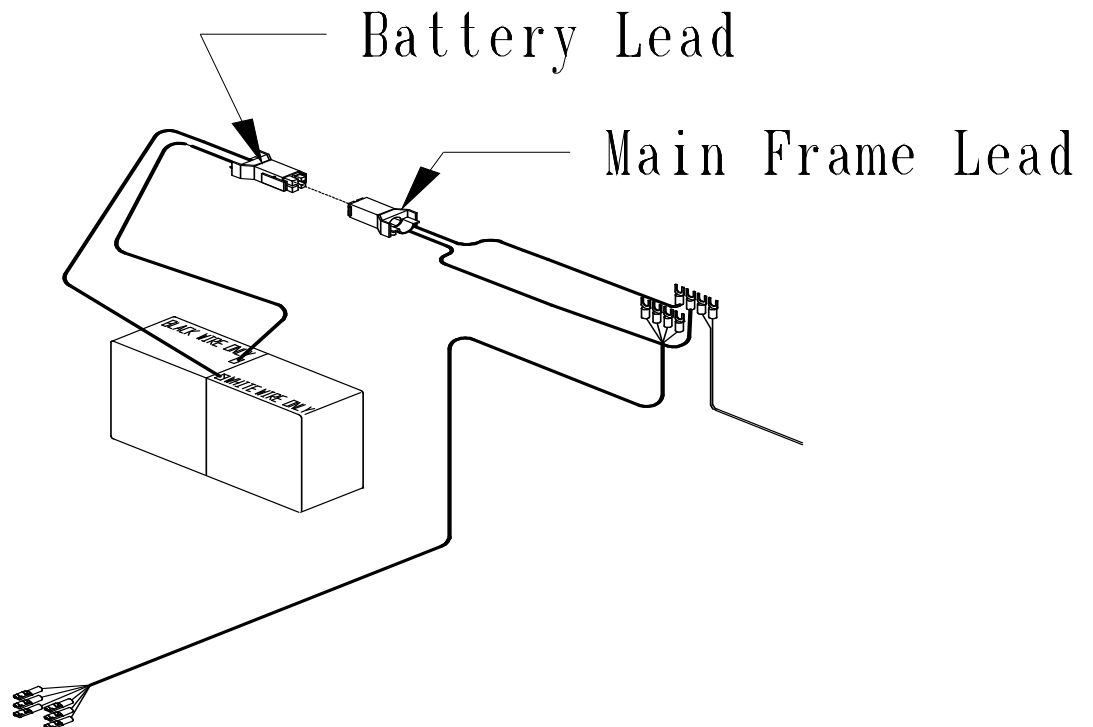
PROBLEM

SUGGESTION

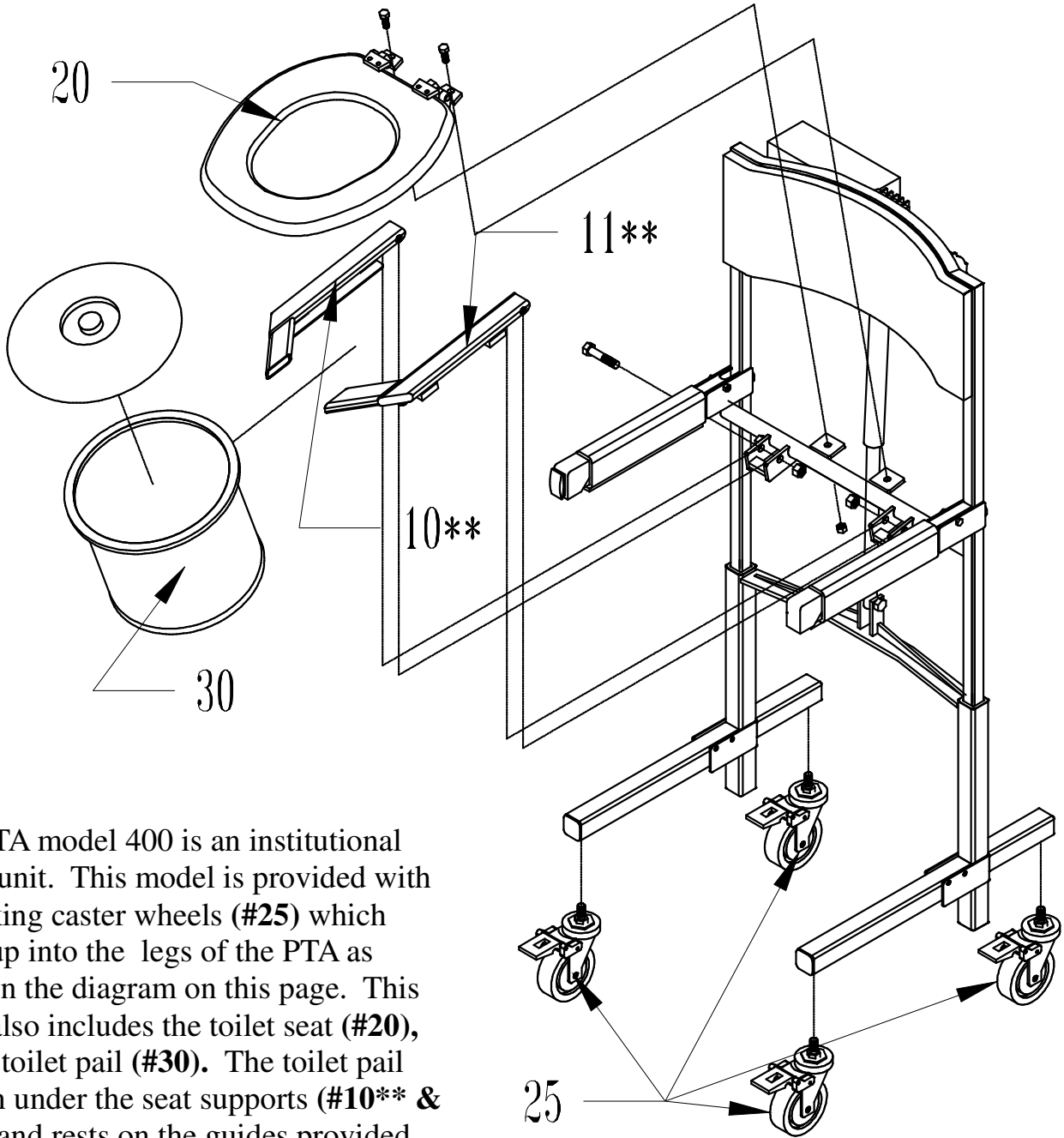
<p>PTA is not working every time, not responsive to the switch.</p>	<ul style="list-style-type: none">- Check battery (charged)- Check all wire connections- Remove the switch arm, make sure switch is connected correctly.
<p>If unit is jerky when going up and down.</p>	<ul style="list-style-type: none">- Lubricate the legs that telescope inside the bottom frame, using clear grease or graphite.

BATTERY INFORMATION

1. Remove battery from the box and place it into the battery pan located on the back side of PTA. Attach the battery lead to the main frame plug. Then push the lift switch button located on the left or right arm rest (depending on which model ordered) on the PTA making sure unit goes up and down correctly.



PTA MODEL 400 18" MOBILE



The PTA model 400 is an institutional mobile unit. This model is provided with the locking caster wheels (#25) which thread up into the legs of the PTA as shown in the diagram on this page. This model also includes the toilet seat (#20), and the toilet pail (#30). The toilet pail slides in under the seat supports (#10** & #11**) and rests on the guides provided on the seat supports. See parts list on page six for part numbers.

STAND AID OF IOWA, INC.
PO BOX 386
SHELDON, IA 51201
1-800-831-8580
1-712-324-2153 (In Iowa)
FAX: 712-324-5210